



Highways Section 278 Civil Engineering

The site is a former gas works with many live mains running through it with easement areas and weight limits throughout. Regular progress meeting, collaborative working, and forward planning with Cadent plant protection and site supervisors ensured the works did not affect the day to day operations of any apparatus.

Leeside Road, Enfield

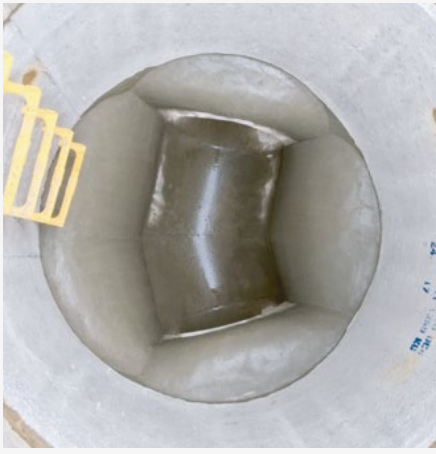
Client. Hydrock Contracting Ltd

Duration. 20 Weeks

Valuation. £600,000



SB Civil Engineering was appointed to deliver the Section 278 works and new access road into the first phase of the £6bn Meridian Waters development



Project Overview

Included in SB Civils works package were temporary bridge foundation and reinforced concrete slabs required to protect Cadent's assets.

Embankment works adjacent to Leaside Road was required to enable the widening of Leaside Road above. Circa 3800 cubic meters of fill material was spread and compact creating a suitable formation for the proposed new carriageway.

Prior to the embankment works SB Civils completed a 110m long surface water sewer diversion up to depths of 4m including 5 new manholes. This was a section 106 requirement from Thames Water.

Carriageway remodelling including widening Leaside Road, new traffic splitter islands incorporating a filter lane, new bellmouth and new footways were constructed over the embankment.

